

Natchez Steamboat

Clark Cothern

$\text{♩} = 144$ ($\text{♩} = \text{♩}^3$)

Trumpet (Bb)

Trombone 1

Bass Trombone

5

9

13

mf

mf

mf

This system contains measures 13 through 18. It features three staves: a treble staff and two bass staves. The music is in a key with two flats and a 3/4 time signature. The first staff has a melodic line with some rests. The second and third staves provide a rhythmic accompaniment with eighth and sixteenth notes. Dynamic markings of *mf* are present in the second and third staves.

19

A

f

f

f

This system contains measures 19 through 23. It features three staves: a treble staff and two bass staves. A section marker 'A' is placed above the first measure of the treble staff. The music continues with similar rhythmic patterns. Dynamic markings of *f* are present in the second and third staves.

24

This system contains measures 24 through 29. It features three staves: a treble staff and two bass staves. The music continues with similar rhythmic patterns. The key signature changes to one flat in measure 24.

30

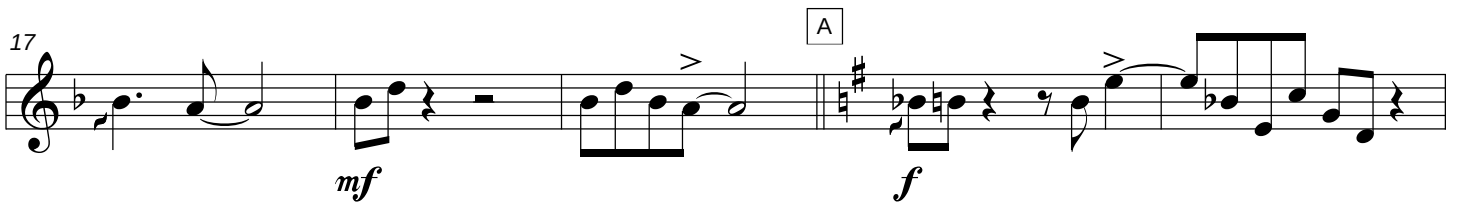
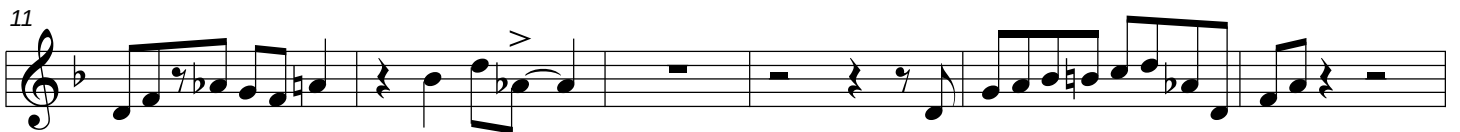
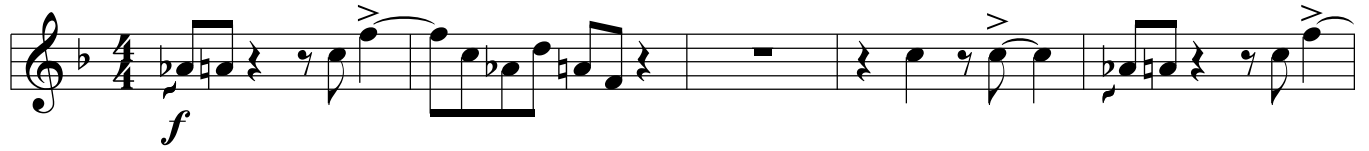
This system contains measures 30 through 34. It features three staves: a treble staff and two bass staves. The music continues with similar rhythmic patterns. The key signature changes to one sharp in measure 30.

Trumpet (Bb)

Natchez Steamboat

Clark Cothern

$\text{♩} = 144$ ($\text{♩} = \overset{\sim}{\text{♩}} \overset{\sim}{\text{♩}}$)



B

38

44

50

C

55

60

65

71

77