

The Moldau

Bedrich Smetana (1824-1884) • Arranged by Kenneth Friedrich

Flowing ♩ = 60

Horn 2 (F)

Horn 3 (F)

Horn 4 (F)

p

p

p

Detailed description: This system contains the first four measures of the score for Horns 2, 3, and 4. Horn 2 (F) is in the treble clef and has rests in measures 1 and 2, then plays a sixteenth-note pattern in measures 3 and 4. Horn 3 (F) is in the treble clef and plays a sixteenth-note pattern throughout. Horn 4 (F) is in the bass clef and plays a sustained half-note chord in every measure. The dynamic marking *p* is present in each part.

5

Hn. 2

Hn. 3

Hn. 4

Detailed description: This system contains measures 5 through 8. Horn 2 (F) is in the treble clef and plays a sixteenth-note pattern in measures 5 and 6, then has a rest in measure 7, and plays a sixteenth-note pattern in measure 8. Horn 3 (F) is in the treble clef and plays a sixteenth-note pattern in measures 5 and 6, has a rest in measure 7, and plays a sixteenth-note pattern in measure 8. Horn 4 (F) is in the bass clef and plays a sustained half-note chord in every measure.

9

Hn. 2

Hn. 3

Hn. 4

Detailed description: This system contains measures 9 through 12. Horn 2 (F) is in the treble clef and plays a sixteenth-note pattern in measure 9, has a rest in measure 10, plays a sixteenth-note pattern in measure 11, and has a rest in measure 12. Horn 3 (F) is in the treble clef and plays a sixteenth-note pattern in measure 9, has a rest in measure 10, plays a sixteenth-note pattern in measure 11, and has a rest in measure 12. Horn 4 (F) is in the bass clef and plays a sustained half-note chord in every measure.

13

Hn. 1
Hn. 2
Hn. 3
Hn. 4

18

A

Hn. 1
Hn. 2
Hn. 3
Hn. 4

mf

mf

mf

22

Hn. 1
Hn. 2
Hn. 3
Hn. 4

26

1. 2. B

Hn. 1 *mf*

Hn. 2 *mf*

Hn. 3 *mp*

Hn. 4 *mf*

30

Hn. 1

Hn. 2 *mp*

Hn. 3 *mf*

Hn. 4

35

1. 2. C

Hn. 1 *mp* *f*

Hn. 2 *mp* *f*

Hn. 3 *mp* *f*

Hn. 4 *mp* *f*

111

Hn. 1 *mf*

Hn. 2 *mf*

Hn. 3 *mf*

Hn. 4 *mf*

113

Hn. 1 *mp*

Hn. 2 *mp*

Hn. 3 *mp*

Hn. 4 *mp*

115

Hn. 1 *rit.*

Hn. 2 *p* *rit.*

Hn. 3 *p* *rit.*

Hn. 4 *p* *rit.*

117 *a tempo*

Hn. 1

Hn. 2

Hn. 3

Hn. 4

pp

pp

pp

121 *a tempo (silent)*

Hn. 1

Hn. 2

Hn. 3

Hn. 4

rit.

rit.

rit.

rit.

ff

ff

ff

ff

Horn 1 (F)

The Moldau

Bedrich Smetana (1824-1884) • Arranged by Kenneth Friedrich

Flowing $\text{♩} = 60$

15

19 A

mf

26

1. B

2.

mf

33

1. C

2.

mp *f*

40 D

mf *mp* *mf*

46 E Faster, in a regal style

f

54

61 F Maestoso $\text{♩} = 80$

2

rit. *mp* *mf*

66



69



72



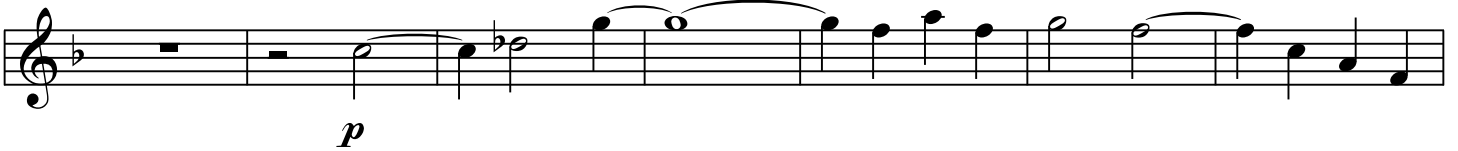
74



79



G Adagio ♩ = 60



92



98

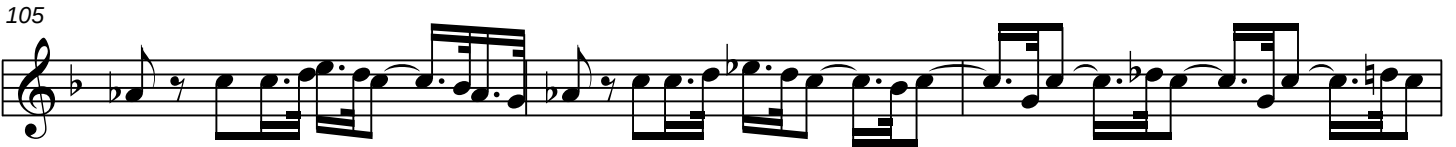


102



Horn 1 • Page 3

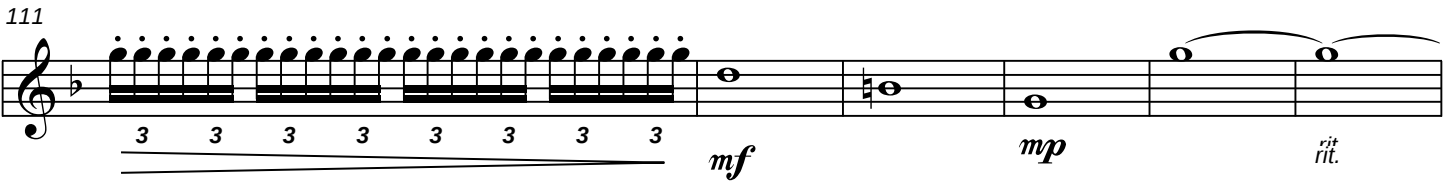
105



108



111



117

