

# Motet in te, Dominae, speravi

Waclaw of Szamotuly (ca.1525-ca.1560) • Arranged by Kevin Riley

Moderato ♩ = 100

Trumpet 1 (Bb)

Trumpet 2 (Bb)

Horn (F)

Trombone

*mf*

*mf*

*mf*

*mf*

This system contains the first seven measures of the score. It features four staves: Trumpet 1 (Bb), Trumpet 2 (Bb), Horn (F), and Trombone. The music is in 4/4 time with a key signature of two sharps (F# and C#). The tempo is Moderato with a quarter note equal to 100 beats per minute. The dynamic marking is mezzo-forte (mf). The Trumpet 1 part begins with a half note G4, followed by quarter notes A4, B4, and C5. The Trumpet 2 part has a whole rest in the first measure, then quarter notes G4, A4, B4, and C5. The Horn part has a whole rest in the first two measures, then quarter notes G4, A4, B4, and C5. The Trombone part has a whole rest in the first two measures, then quarter notes G3, A3, B3, and C4.

8

Tpt. 1

Tpt. 2

Hrn.

Tbn.

This system contains measures 8 through 14. The instrumentation remains the same. The music continues with various rhythmic patterns and melodic lines for each instrument. The dynamic marking remains mezzo-forte (mf). The score includes slurs and accents over various notes.

15

Tpt. 1

Tpt. 2

Hrn.

Tbn.

This system contains measures 15 through 21. The instrumentation remains the same. The music continues with various rhythmic patterns and melodic lines for each instrument. The dynamic marking remains mezzo-forte (mf). The score includes slurs and accents over various notes.

23

Tpt. 1

Tpt. 2

Hrn.

Tbn.

32

Tpt. 1

Tpt. 2

Hrn.

Tbn.

41

Tpt. 1

Tpt. 2

Hrn.

Tbn.

50

Tpt. 1

Tpt. 2

Hrn.

Tbn.

Trumpet 1 (Bb)

# Motet in te, Dominae, speravi

Waclaw of Szamotuly (ca.1525-ca.1560) • Arranged by Kevin Riley

Moderato ♩ = 100

7

13

22

31

38

44

50

*mf*

*mf*

*f*

*mf*

Trumpet 1 (Bb) • Page 2

56



63



70



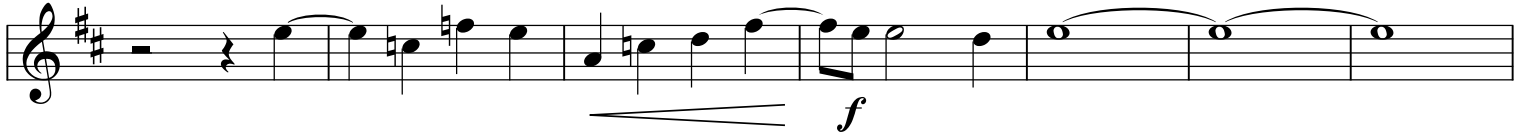
77



85



91



98



105



111

