

Sonata (L.23)

(Orig. in E)

Domenico Scarlatti (1685-1757)

Arranged for Brass Quintet by Dave Taylor

Andante comodo ♩ = c. 90

Trumpet 1 (Bb)

Trumpet 2 (Bb)

Horn (F)

Trombone

Tuba

6

mf

f *mf*

Trumpet 1 (Bb)

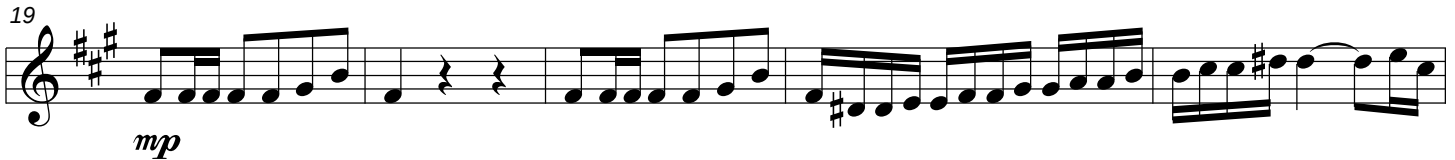
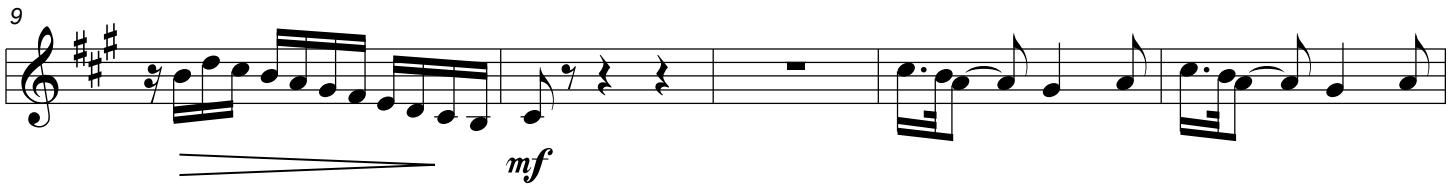
Sonata (L.23)

(Orig. in E)

Domenico Scarlatti (1685-1757)

Arranged for Brass Quintet by Dave Taylor

Andante comodo ♩ = c. 90



Trumpet 1 • Page 2

41 **2**

p *mp*

48

p *mp*

54

mp

59

mp

64

f

71

ff

77

(rit. 2nd time)