

Concerto No. 4 "Winter"

from *The Four Seasons*, Op. 8 RV 297

Antonio Vivaldi (1678-1741)

Arranged for Tubatet Hannover and Jens Bjorn-Larsen by Vikentios Gionanidis

I

Allegro non molto

tr tr tr tr tr tr tr tr

simile until A

Tuba Solo

Tuba 1

Tuba 2

Tuba 3

Tuba 4

mp

mf

mp

mp

mp

Tuba Solo

Tuba 1

Tuba 2

Tuba 3

Tuba 4

6

cresc.

cresc.

cresc.

cresc.

cresc.

11 A

Solo

Tba. 1

Tba. 2

Tba. 3

Tba. 4

f

mf

14

Solo

Tba. 1

Tba. 2

Tba. 3

Tba. 4

mf

17

Solo

Tba. 1

Tba. 2

Tba. 3

Tba. 4

p

B

20

Solo

Tba. 1

Tba. 2

Tba. 3

Tba. 4

p

molto cresc.

f

mf

p

molto cresc.

f

p

molto cresc.

f

24

Solo

Tba. 1

Tba. 2

Tba. 3

Tba. 4

27

Solo

Tba. 4

(p cresc.)

(p cresc.)

29

Solo

Tba. 4

(f ... p cresc.)

(f ... p cresc.)

Tuba Solo

Concerto No. 4 "Winter"

from *The Four Seasons*, Op. 8 RV 297

Antonio Vivaldi (1678-1741)

Arranged for Tubatet Hannover and Jens Bjorn-Larsen by Vikentios Gionanidis

I

Allegro non molto

3

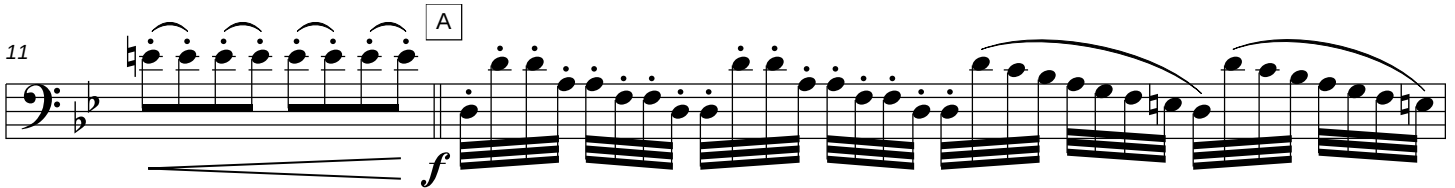
tr tr tr tr tr tr tr tr simile until A



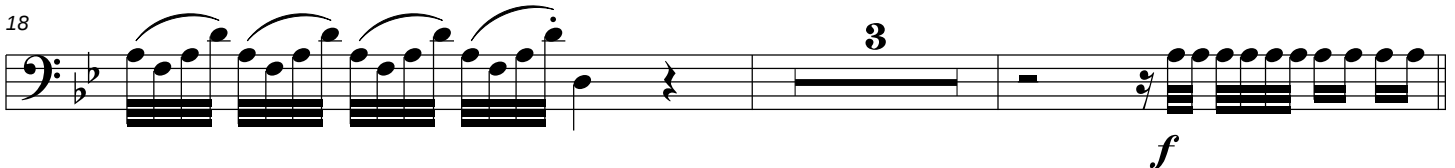
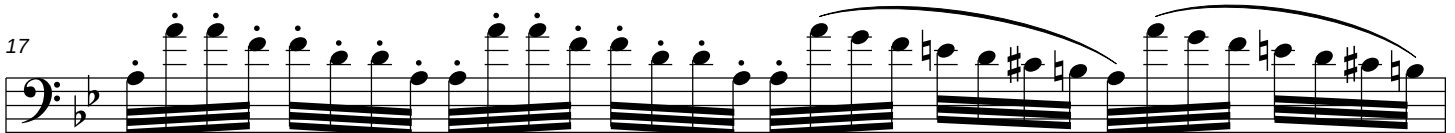
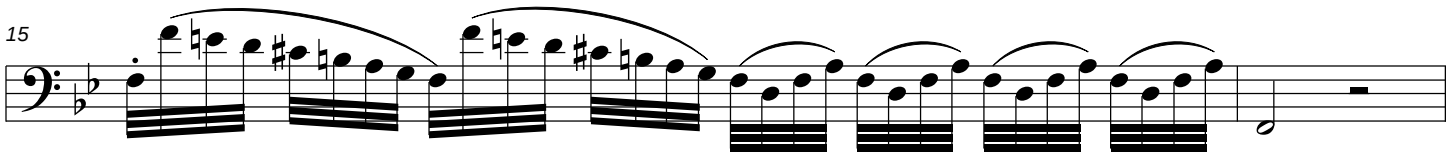
mf



cresc.



f



f

Tuba Solo • Page 2

B

25

27

p cresc.

28

29

f p cresc.

30

31

32

33

f

Tuba Solo • Page 3

35

37

f

44

mf

47

p

53

cresc.

57

cresc.

59

ff

61

II

Largo

Musical score for Section II, Tuba Solo, measures 1-12. The score is written in bass clef with a key signature of one flat (B-flat). It begins with a mezzo-piano (*mp*) dynamic. The music features a series of eighth-note patterns with slurs and trills. Measure 7 includes a trill and a dynamic change to mezzo-forte (*mf*). Measure 12 starts with a piano (*p*) dynamic, followed by a forte (*f*) dynamic, and ends with a decrescendo (*dim.*) to piano. A first ending bracket labeled 'A' spans measures 7-12. An octave sign (*8va*) is present above measures 7-12.

III

Allegro

Musical score for Section III, Tuba Solo, measures 1-14. The score is written in bass clef with a key signature of one flat (B-flat) and a 3/8 time signature. It begins with a forte (*f*) dynamic and the instruction '(freely)'. The music consists of eighth-note patterns with slurs. Measure 14 includes a first ending bracket labeled 'A' and a decrescendo (*>*) to piano (*p*).