

# Nunc Scio Vere

Waclaw of Szamotuly (ca.1525-ca.1560) • Arranged by Kevin Riley

♩ = 109

Trumpet 1 (Bb)

Trumpet 2 (Bb)

Horn (F) or Trombone

Trombone

*mf*

*mf*

*mf*

*mf*

Detailed description: This is the first system of a musical score for 'Nunc Scio Vere'. It consists of four staves. The top staff is for Trumpet 1 (Bb), the second for Trumpet 2 (Bb), the third for Horn (F) or Trombone, and the bottom for Trombone. The key signature is two sharps (F# and C#) and the time signature is 4/4. A tempo marking of a quarter note equals 109 is shown at the top left. The music begins with a rest for the first two staves in the first measure. The second measure starts with a mezzo-forte (*mf*) dynamic. The Horn/Trombone part has a rest in the first two measures, then enters in the third measure with a mezzo-forte (*mf*) dynamic. The Trombone part enters in the first measure with a mezzo-forte (*mf*) dynamic. The music features a mix of quarter, eighth, and sixteenth notes, with some slurs and ties.

5

Detailed description: This is the second system of the musical score, starting at measure 5. It continues with the same four staves as the first system. The music continues with various rhythmic patterns, including eighth and sixteenth notes, and rests. The dynamic remains mezzo-forte (*mf*). The system concludes with a final cadence in the fourth measure.

10

Musical score system 10-16. The system consists of four staves. The top staff is in treble clef with a key signature of two sharps (F# and C#). The second and third staves are in treble clef with a key signature of one sharp (F#). The bottom staff is in bass clef. The music features a variety of note values including quarter, eighth, and sixteenth notes, along with rests and ties.

17

Musical score system 17-22. The system consists of four staves. The top staff is in treble clef with a key signature of two sharps (F# and C#). The second and third staves are in treble clef with a key signature of one sharp (F#). The bottom staff is in bass clef. The music continues with similar rhythmic patterns and note values as the previous system.

23

Musical score system 23-28. The system consists of four staves. The top staff is in treble clef with a key signature of two sharps (F# and C#). The second and third staves are in treble clef with a key signature of one sharp (F#). The bottom staff is in bass clef. The music concludes with various rhythmic figures and rests.

Trumpet 1 (Bb)

# Nunc Scio Vere

Waclaw of Szamotuly (ca.1525-ca.1560) • Arranged by Kevin Riley

♩ = 109

Tpt. 2 *mf*

6

12

18

24

30

37

Trumpet 1 (Bb) • Page 2

44



50



55



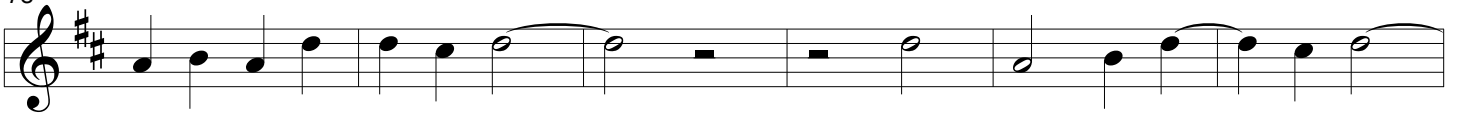
61



67



73



79



85

