

Three Madrigals

Transcribed by Kenneth Friedrich

April is in My Mistress' Face

Thomas Morley (1557/58-1602)

Moderato con moto

Musical score for Euphonium 1, Euphonium 2, Tuba 1, and Tuba 2, measures 1-4. The score is in bass clef with a key signature of two flats (B-flat and E-flat) and a common time signature (C). The tempo is Moderato con moto. The dynamics are marked *mf* (mezzo-forte). Euphonium 1 and Euphonium 2 play a melodic line starting with a quarter note G2, followed by eighth notes. Tuba 1 and Tuba 2 play a bass line starting with a quarter note G2, followed by eighth notes. The score is divided into four measures.

Musical score for Euphonium 1, Euphonium 2, Tuba 1, and Tuba 2, measures 5-8. The score is in bass clef with a key signature of two flats (B-flat and E-flat) and a common time signature (C). The tempo is Moderato con moto. The dynamics are marked *mf* (mezzo-forte). Euphonium 1 and Euphonium 2 play a melodic line starting with a quarter note G2, followed by eighth notes. Tuba 1 and Tuba 2 play a bass line starting with a quarter note G2, followed by eighth notes. The score is divided into four measures, with a measure number '5' above the first measure of the system.

Adieu, Sweet Amaryllis

John Wilbye (1574-1638)

Adagio

Musical score for Euphonium 1, Euphonium 2, Tuba 1, and Tuba 2, measures 1-6. The score is in bass clef with a key signature of one flat (B-flat) and a common time signature (C). The tempo is marked 'Adagio'. The dynamics are marked *mf* (mezzo-forte) for all parts. Euphonium 1 and 2 play a melodic line with a fermata on the first measure. Tuba 1 and 2 play a rhythmic accompaniment.

Musical score for Euphonium 1, Euphonium 2, Tuba 1, and Tuba 2, measures 7-11. The score is in bass clef with a key signature of one flat (B-flat) and a common time signature (C). The tempo is marked 'Adagio'. The dynamics are marked *p* (piano) and *mf* (mezzo-forte). Euphonium 1 and 2 play a melodic line with a fermata on the first measure. Tuba 1 and 2 play a rhythmic accompaniment. The score includes dynamic markings and hairpins for crescendo and decrescendo.

Il Est de Bonne Heure Ne

Anonymous (c.1470)

Con Moto

Musical score for Euphonium 1, Euphonium 2, Tuba 1, and Tuba 2, measures 1-6. The score is in bass clef with a common time signature (C). The tempo is marked "Con Moto". The dynamics are marked *mf* (mezzo-forte). The Euphonium 1 and 2 parts play a melodic line with eighth notes and quarter notes. The Tuba 1 part plays a rhythmic accompaniment with quarter notes and eighth notes. The Tuba 2 part plays a rhythmic accompaniment with quarter notes and eighth notes.

Musical score for Euphonium 1, Euphonium 2, Tuba 1, and Tuba 2, measures 7-11. The score is in bass clef with a common time signature (C). The tempo is marked "Con Moto". The dynamics are marked *mf* (mezzo-forte). The Euphonium 1 part has a melodic line with eighth notes and quarter notes, including a sharp sign (#) in measure 7. The Euphonium 2 part plays a rhythmic accompaniment with quarter notes and eighth notes. The Tuba 1 part plays a rhythmic accompaniment with quarter notes and eighth notes. The Tuba 2 part plays a rhythmic accompaniment with quarter notes and eighth notes.

Euphonium 1 (Bass Clef)

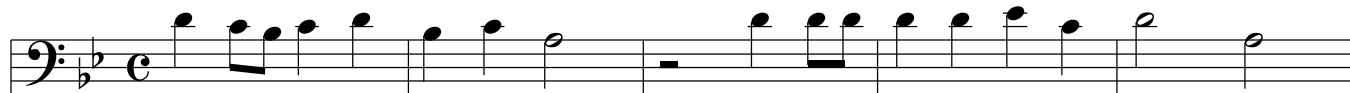
Three Madrigals

Transcribed by Kenneth Friedrich

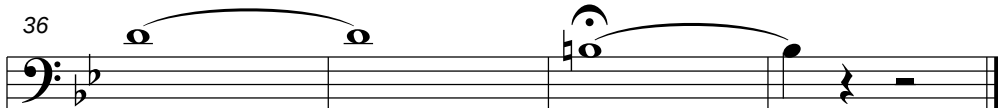
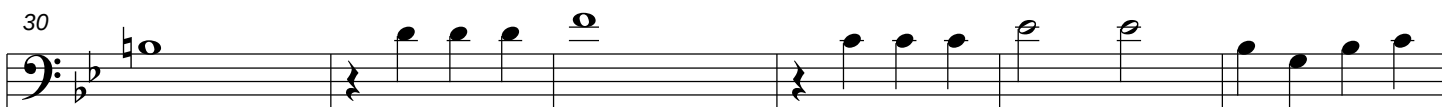
April is in My Mistress' Face

Thomas Morley (1557/58-1602)

Moderato con moto



mf



Euphonium 1 (Treble Clef)

Three Madrigals

Transcribed by Kenneth Friedrich

April is in My Mistress' Face

Thomas Morley (1557/58-1602)

Moderato con moto

