

Canadian Folk Song Suite

Traditional • Arranged by Kevin Thompson

1. Bien Travailler - Alouette (*Moto Perpetuo*)

Allegro (♩ = 108)

Musical score for Trombone 1, 2, 3, and 4, measures 1-5. The score is in 2/4 time, key of B-flat major, and tempo Allegro (♩ = 108). Trombone 1 and 2 play a melodic line with a *mp* muted dynamic. Trombone 3 is silent. Trombone 4 has a *mf* solo starting in measure 4.

Musical score for Trombone 1, 2, 3, and 4, measures 6-10. The score continues from measure 5. Trombone 1 and 2 continue their melodic line. Trombone 3 remains silent. Trombone 4 continues its solo line.

12

Musical score system 12-17. It consists of four staves. The first two staves are in the right hand (treble clef), and the last two are in the left hand (bass clef). The key signature has two flats. The system starts with a 3/4 time signature and changes to 7/8 and back to 3/4. The first three measures show a rhythmic pattern of eighth notes in the right hand and quarter notes in the left hand. The last three measures feature a more complex rhythmic pattern with sixteenth notes in the left hand. The dynamic marking *mf* is present in the second and fourth measures.

18

Musical score system 18-25. It consists of four staves. The first two staves are in the right hand (treble clef), and the last two are in the left hand (bass clef). The key signature has two flats. The system starts with a 3/4 time signature and changes to 7/8 and back to 3/4. The first three measures feature a melody in the right hand with accents and a dynamic marking of *f* open (bell tones). The left hand plays a steady eighth-note accompaniment. The dynamic marking *mf* appears in the fourth measure.

26

Musical score system 26-31. It consists of four staves. The first two staves are in the right hand (treble clef), and the last two are in the left hand (bass clef). The key signature has two flats. The system starts with a 7/8 time signature and changes to 3/4 and back to 7/8. The first three measures show a rhythmic pattern of eighth notes in the right hand and quarter notes in the left hand. The last three measures feature a more complex rhythmic pattern with sixteenth notes in the left hand. The dynamic marking *mf* is present in the second, third, and fourth measures.

Canadian Folk Song Suite

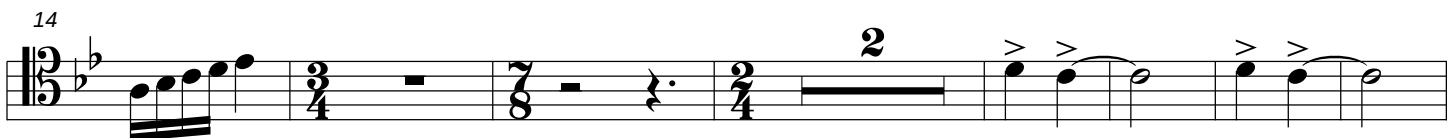
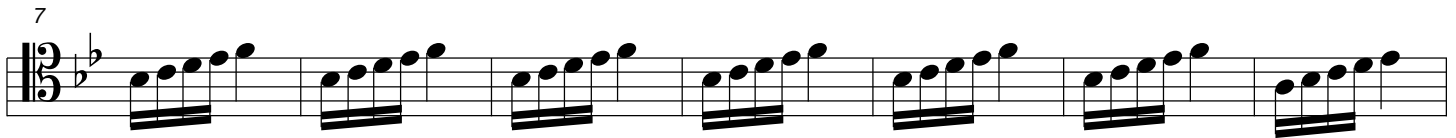
Traditional • Arranged by Kevin Thompson

1. Bien Travailler - Alouette (*Moto Perpetuo*)

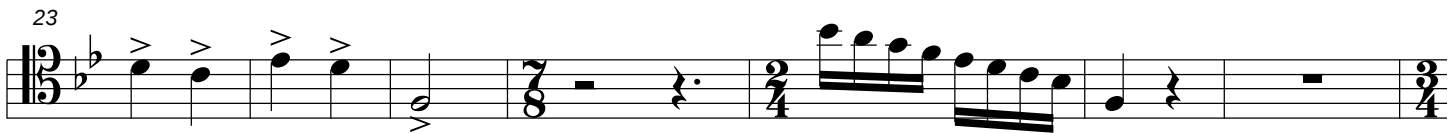
Allegro (♩ = 108)



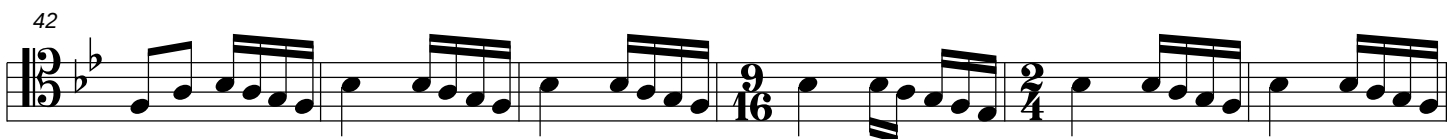
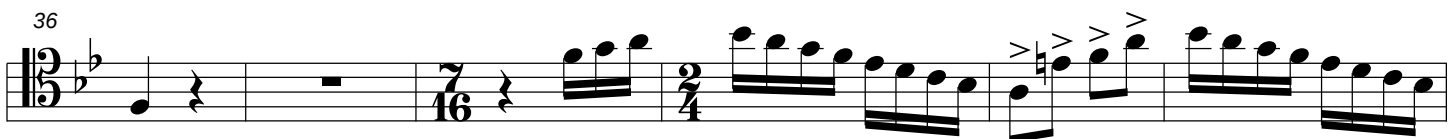
mp muted



f open (bell tones)



mf



dim.

p